

# GSS HIRE



# OVERVIEW

---

Ground Support System Aust. (GSS Aust.) or GSS Hire was established in 2006, setting the benchmark for trenchless technology and civil excavations. We are dedicated to helping our customers deliver construction and infrastructure projects efficiently and safely by providing a broad range of groundworks equipment and services for hire and sales.

*D. MacCormick*

## TABLE OF CONTENT

---

03	About us	08	Water Supply
05	Why choose us?	09	Enviromental
06	Trench Shoring	10	Project History
07	Dewatering	12	Contact Us

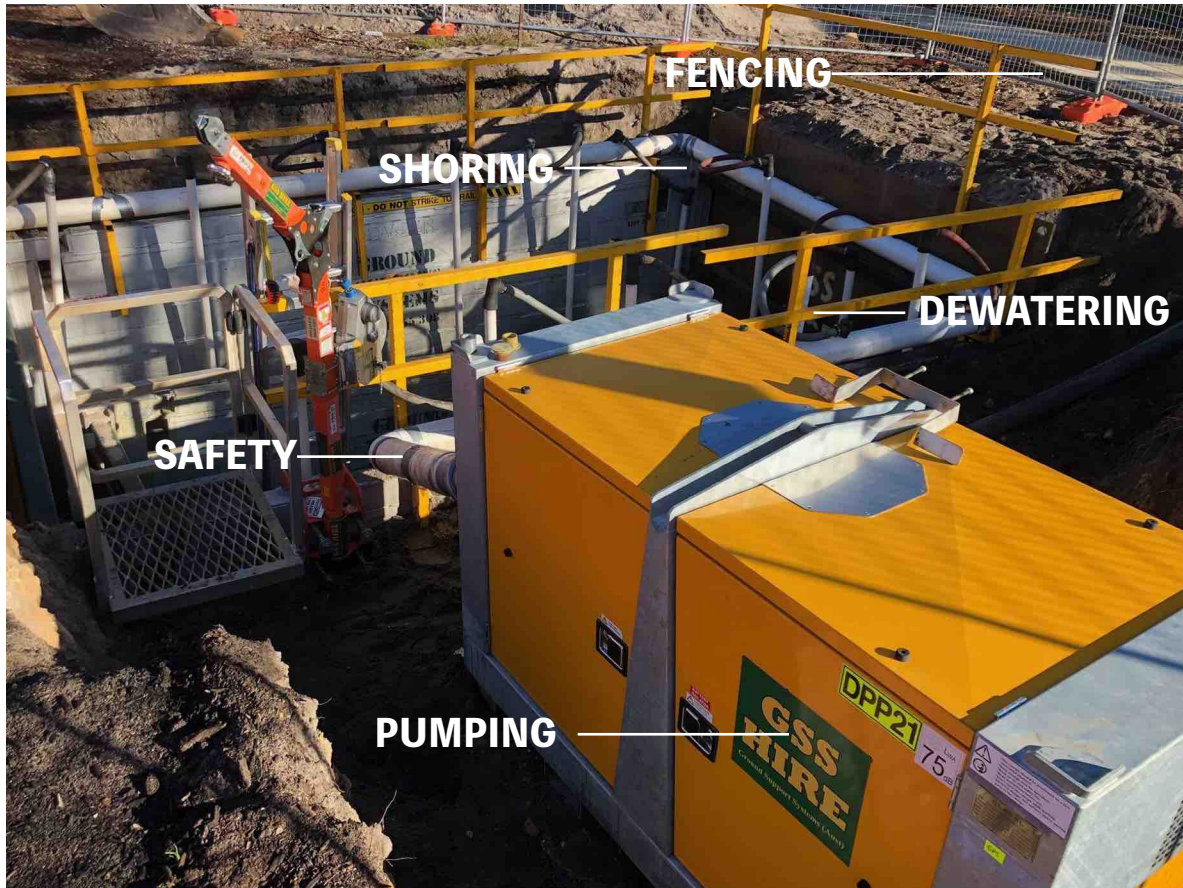
## PRODUCTS & SERVICES

---

01	Well-point Dewatering	10	Heavy Duty Steel Shoring
02	Pump & Dewatering Equipment Hire	11	High Clearance Arches
03	Open Pump & Sump Pumping	12	Heavy Duty Aluminium Shoring
04	Deep well dewatering	13	Aluminium Vertical Shores
05	Water Treatment & Monitoring	14	Safety Equipment Hire
06	Bore Installation and Maintenance	15	Road Plates Hire
07	Construction Water Equipment Hire	16	Propping Systems
08	Generator & Standpipe Hire	17	Pipe Testing Equipment Hire
09	Sewer Bypass	18	Construction Plant Hire

# ABOUT US

GSS Hire is a civil contractor with over 40 years of history and experience. Our reputation for excellence has created an unrivalled ability to deliver a diversified range of construction services at any project scale. Started as a supplier of shoring equipment, we have since expanded our capabilities to groundwater control, equipment hire, and water supply & management.



The equipment required to undertake your next scope of works is readily available in all our branches, Australia-wide. An extensive range of pumps, pipework, water treatment, and electrical systems are maintained and available for delivery nationwide at a phone call's notice. Not just that, we also offer for hire a vast number of trench shoring and earth moving equipment, being a complete package for your next project.

## THE COMPLETE PACKAGE







## 01 DESIGN & CONSULTATION

Methodical design, planning, and consultation process to suit budget, timeframe, regulatory requirements, and constraints.

## 02 DELIVERY & SERVICE

With extensive specialized knowledge, our team will go above and beyond to provide excellent services and meet the project timeline.

## 03 40 YEARS OF EXPERIENCE

A pioneer in trenchless technology and proven experience in completing thousands of construction projects internationally and Australia wide.

## 04 INDUSTRY EXPERTS

World-class work-force and support team, with a focus on innovation, continuous improvement, customer satisfaction, operational excellence, and outstanding leadership.

## OUR MISSION

To set the benchmark in shoring and dewatering systems by delivering exceptional and value-adding solutions on each project.

## OUR VISION

To maintain our dedication to providing practical and reliable solutions through our close-knit relationships with our clients and sub-contractors

## OUR GOALS

To deliver a unique client committed solution that can be relied upon time and time again.

In recognition that workplace safety is more than rules and regulations, GSS Aust. Tries to instill a positive safety culture in its workplace. Our safety procedures and policies promote a culture where safety is the first thought before undertaking any tasks. Our commitment to ongoing training provides our team with the best tool for safety management, which is knowledge.

This holistic approach is designed to ensure everyone at GSS Aust. Take personal accountability for safe practices within their area of responsibility.

Our Safety team works in consultation with the rest of GSS Aust. Teams with the objective of achieving an outstanding safety performance and adopting best practice policy.

Ground Support System health and safety management systems are in full compliance with Workplace Health and Safety legislation requirements.

**WORKPLACE SAFETY  
INSTILLED IN OUR CULTURE**



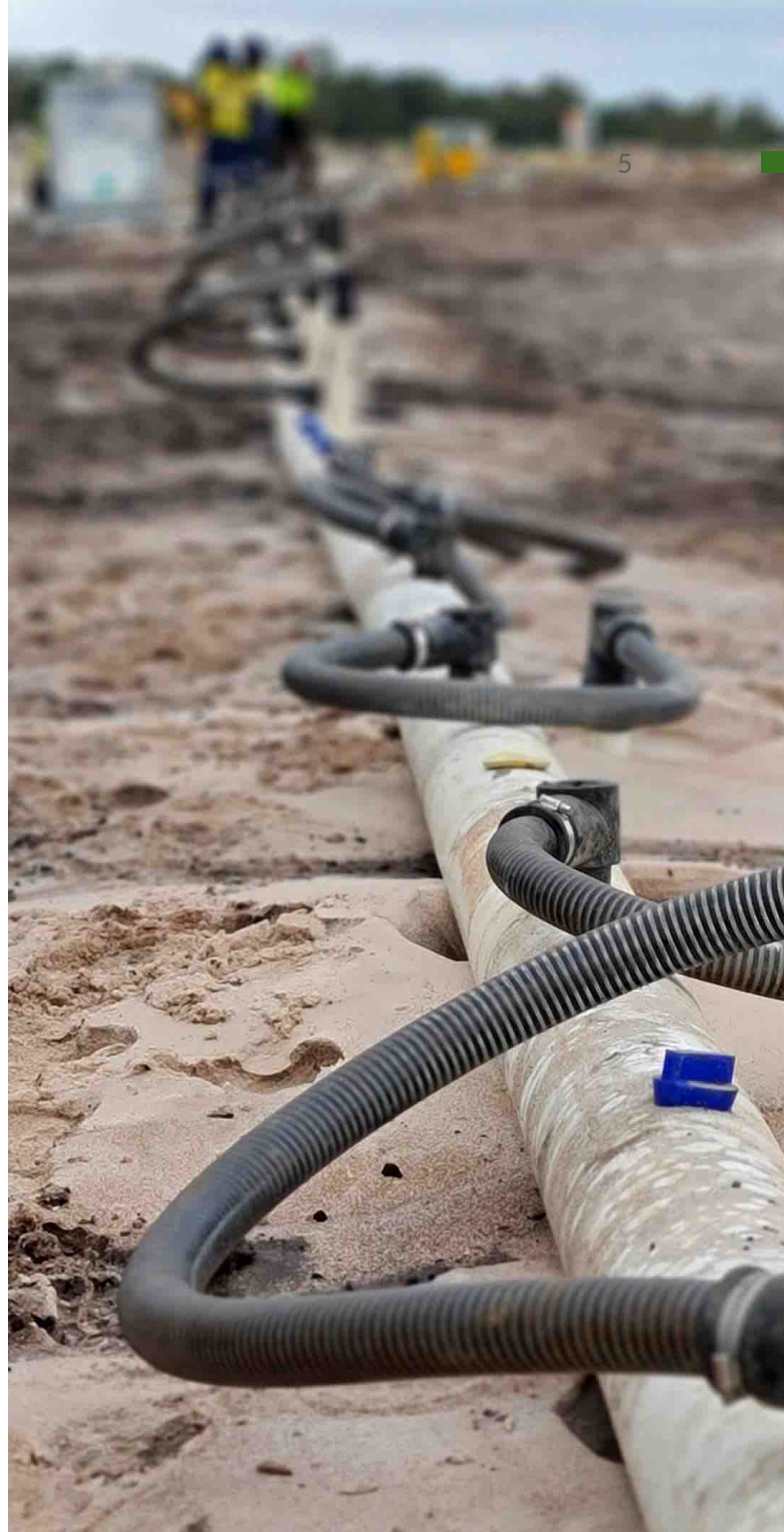
# WHY CHOOSE US?

*GSS Aust. is a standalone company that means we can assess the job, design a system unique to that project, and manufacture and maintain all aspects in-house. We have unparalleled experience in construction and mining with services that are available Australia-wide.*

Our experienced personnel range from site-based project crews to teams available for fly-in, fly-out rosters. All works conducted on all of our sites are always carried out within the relevant industry's safety standards and practices. Our reputation for delivering and achieving absolute customer satisfaction for our clients is why we have achieved phenomenal growth in a short amount of time and is a standard we pride ourselves on.

## ADVANTAGES

- **ONE PHONE CALL** - GSS believes contacting a business shouldn't be challenging, especially when deadlines are tight; therefore, we believe in dealing directly with our client. One phone call is all that is needed from start to finish of the project.
- **PACKAGE DEAL** - There are many moving parts to any excavation or construction, and GSS believes in providing core capabilities that make sense. Being able to provide shoring with dewatering hand in hand is like providing a burger with fries,
- **24/7 SERVICE** - Just like your favorite fast food joint, we are also available 24/7 for scheduled or after-hours emergency works. With a prompt turn around time, GSS can deliver the equipment when you need it most.
- **FAMILY OWNED** - All personal at GSS treat the business like their own; that way, you know you are getting 100% commitment as we take every project personally.
- **CORE BUSINESS** - GSS believes in keeping within its core business to ensure we continue to provide the very best in equipment and knowledge.



We are trusted by

# 500+

CLIENTS



# TRENCH SHORING

Ground Support Systems range of Heavy Duty trench shoring Boxes are the most versatile shoring boxes in the industry. Combining strength, durability, and robust design, allowing them to be used for all applications from basic trenching, boring/receival pits, manholes, pump stations, installing GPT,s and much more. All Heavy Duty shoring boxes are also compatible to use with our HT6 and HDA high clearance arches for laying large diameter pipes or box culverts etc. Our Heavy Duty shoring boxes are available in various panel lengths from 3.6m, 4.3m, and 6.1m and also Australia's largest steel shoring box 7.3m long.



## HEAVY DUTY STEEL

### SHORING

Highest KPA rating in the industry.



## LIGHT WEIGHT ALUMINIUM

### SHORING

Stackable and lightweight for universal use

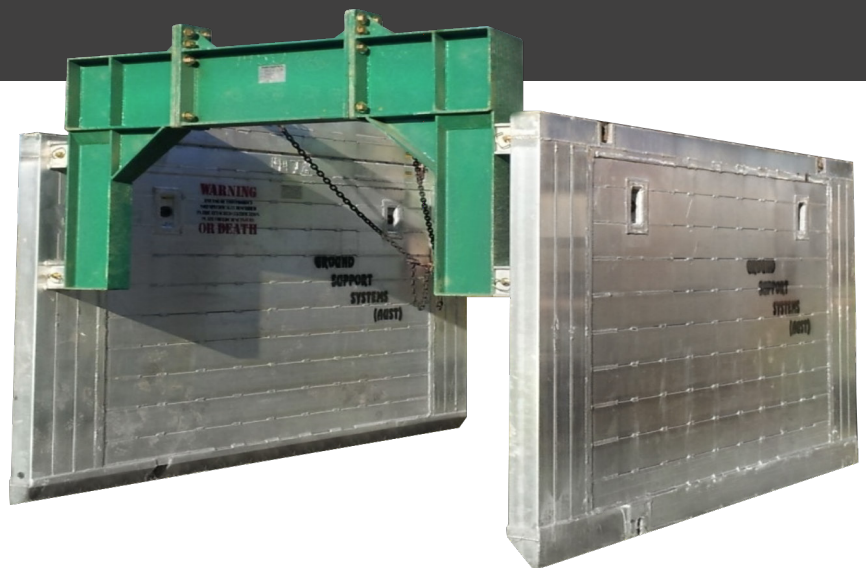


## SAFETY & ACCESSORIES

### ATTACHMENTS

Full range of davet arms, hand rails and more

- HT6 Heavy Duty Steel Shoring
- Heavy Duty Aluminium Shoring
- HT6 High Clearance Arches
- HDA High Clearance Arches
- XLAP Aluminium Shoring
- Medium Duty Shoring
- Lifting Equipment & Accessories
- Propping
- Steel Road Plates
- Hydraulic Aluminium Vertical Shores



**WE OFFER SOLUTIONS  
NOT JUST STEEL**



## DEWATERING & WATER MANAGEMENT

Since 2016, GSS has seen exponential growth and have expanded our core capabilities to include water management through dewatering and dewatering equipment hire.

Through this expansion, we now provide our customers with a turnkey dewatering service and a full range of pumping equipment for ground water control solutions on their projects.

Our skilled team of dewatering and pump technicians have a combination of more than 30 years of dewatering experience and proven track records in delivering successful, cost-effective dewatering projects within the construction, government, and mining sectors.

## COST EFFECTIVE DEWATERING SOLUTIONS

- Design & Consultation
- Well-point Dewatering
- Open Pump & Sump Dewatering
- Deep Well Dewatering
- Pump & Equipment Hire
- Water Testing & Treatment
- Reinjection
- Bore Installation & Maintenance
- Project Management
- Around The Clock Monitoring
- Environmental Impact Reduction
- Afterhour Emergency Service



### WELLPOINT DEWATERING

Builder

Over 30 years of combined experience



### DEEP WELL & SUMP PUMP

Builder

Full range of pumping equipment



### 24/7 SERVICE

Builder

Oncall and afterhour emergency service



# WATER SUPPLY

Ground Support Systems work with clients to ensure tailor-made solutions are developed to suit individual project requirements. Our solutions take into account project duration, overall cost, and environmental impact. GSS offers a wide range of water supply equipment both for short and long term hire.



1

## PUMPS - TRANSFER/STANDPIPE

A selection of open skid and noise attenuated equipment available to suit any project location.

- Remote operation with remote Wifi monitoring of operation and condition.
- Ability to operate in areas of 50 degrees ambient temperature.
- High / low pressure stop start.
- Flow capacity from 15 - 150 l/s.
- Service intervals of 1000 operational hours.

2

## BORE PUMPS

A wide range of multi-stage bore pumps to suit most project requirements.

- Flow rates from 5 to 40 l/s.
- Multi-stage available for up to 300 meters total dynamic head.
- Cable joints and splicing by OEM.
- Cathodic protection to suit high chlorides where required.
- All control boxes include soft starters ensuring generators selected to provide the lowest possible fuel burn rate at optimum running rate.

3

## PORTABLE POWER

A wide selection of the most efficient generators to provide a cost-efficient and effective solution.

- Based on prime or stand-by operation requirements
- Full selection of project-specific control panels
- Remote monitoring and operation
- Ability to operate in areas of 50 degrees ambient temperature.
- Service intervals of 500 operational hours.

All of our pumps and equipment are tested in-house prior to dispatch. GSS personal ensure all the necessary equipment is included to deliver a reliable and compliant water supply. Every system is tailored to suit your specific requirements, which allows us to guarantee maximum results. Our experienced teams can provide a full turn-key service, including installing pipelines through to commissioning and handover. Alternatively, GSS can supply individual equipment hire complete with procedures and professional guide for your personnel to install.

**TAILORED MADE**  
**TO SUIT SITE REQUIRMENTS**



# ENVIROMENTAL

Ground Support Systems' unparalleled experience is not just on dewatering and shoring. We are also highly familiar with the water treatment aspect of groundwater management. We offer several groundwater treatment options suitable for all size

projects. Depending on project requirements, however, GSS can also provide turn-key solutions that are fully monitored to ensure compliance and a risk-free outcome.



## MONITORING

24/7 Water & Telemetry System Monitoring  
Daily monitoring of dewatering equipment  
Water and Soil quality sampling and reporting  
Onsite breakdown repair and servicing



## PH ADJUSTMENT

Available in both lime and caustic  
Fully automated, All in one process  
Compact plug and play units  
Self-contained and banded



## SETTLEMENT CONTROL

Wide range of units that reduce groundwater contaminants and suspended solids.  
Fast-acting gravity separation units  
Compact with minimal maintenance



## HEAVY METALS CONTROL

Groundwater remediation from heavy metals  
Sludge Processing for waste reduction.  
Metal Hydroxide or Sulfide Precipitation, Ion Exchange, Evaporation and Membrane



## IMPACT REDUCTION



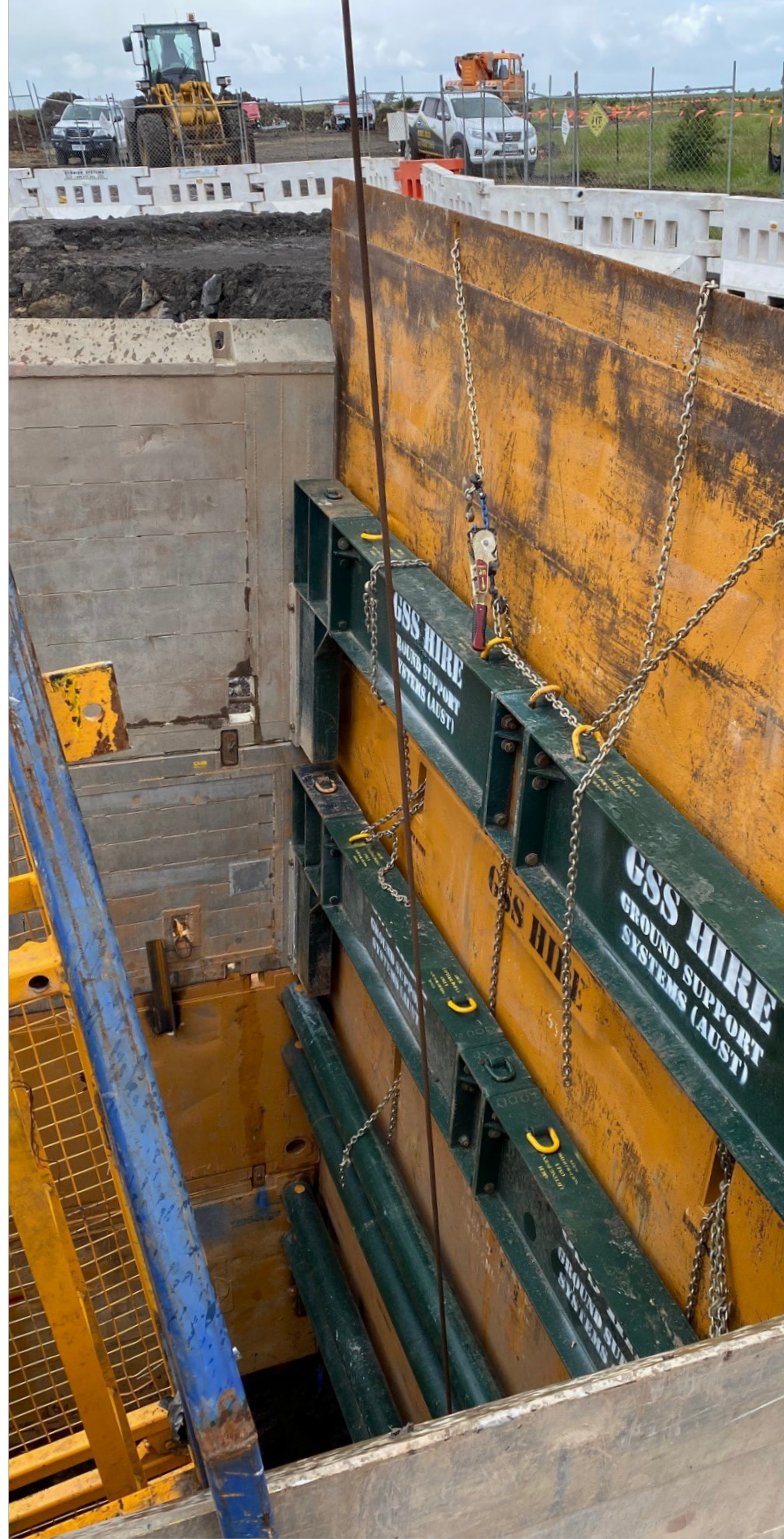
## SUSTAINABILTY



# OUR LATEST PROJECTS

A wide range of builders and civil & mining contractors have engaged Ground Support Systems across a number of key projects since establishment, with many often referring GSS as their leading supplier due to the long lasting established relationship.

- Costco Warehouse - Georgiou
- Perth Recharge Pipeline - Civcon



- Oaky Creek Coal Mine - Glencore
- Emu Lake Wetlands - City of Swan
- Cottesloe Beach Upgrade - MG Group
- Seanna Apartments - Tomkins
- Woolworths Highgate - Broad
- Winu Earthworks - Rio Tinto
- Perth City Rail Link - Civcon
- Kings Square Redevelopment - Probuild
- Brabham Land Development - RJV
- Abbot Point Coal Mine - Adani Australia
- Gold Coast Waste Water - John Holland



## SDOOL DUPLICATION PIPELINE

Dewatering and shoring required for the 2km long Sepia Depression Ocean Outlet Landline wastewater pipeline to facilitate the installation of a duplicate DN1400

---

Client: Avid Resources  
Budget: \$1 120 000.00  
Date: Current



## APEX PARK UPGARDE

Dewatering and treatment required along side the highly sensitive Swan river area.

---

Client: Advantearing  
Budget: \$20 000.00  
Date: May 20





## CURTIN UNIVERSITY EXPANSION

Dewatering was required as part of the Curtin University upgrade. Care was taken to select a viable and environmentally safe discharge option.

---

Client: Axis Plumbing, Probuild  
Budget: \$15 000.00  
Date: Jan 21



## COCKBURN, FIRE STATION

A high flow solution was required for a 7m deep bore shot along North lake rd to provide a major sewer connection to the new Cockburn training facility.

---

Client: Rodgers Plumbing, EMCO  
Budget: \$270 000.00  
Date: Jul 20 - Dec 20



## MANDURAH FORESHORE UPGRADE

A specifically designed dewatering system to ensure groundwater cut-off was achieved between the Mandurah estuary and the proposed excavation.

---

Client: Advantearing  
Budget: \$55 000.00  
Date: Jan 21 - Current





## ANSTEY RD, PUMP STATION

Wellpointing and open pumping were required for the installation of a new wet well pump station as part of the greater Forestdale business park development.

---

Client: Wormalls Civil  
 Budget: \$20 000.00  
 Date: Nov 19 - Jan 20

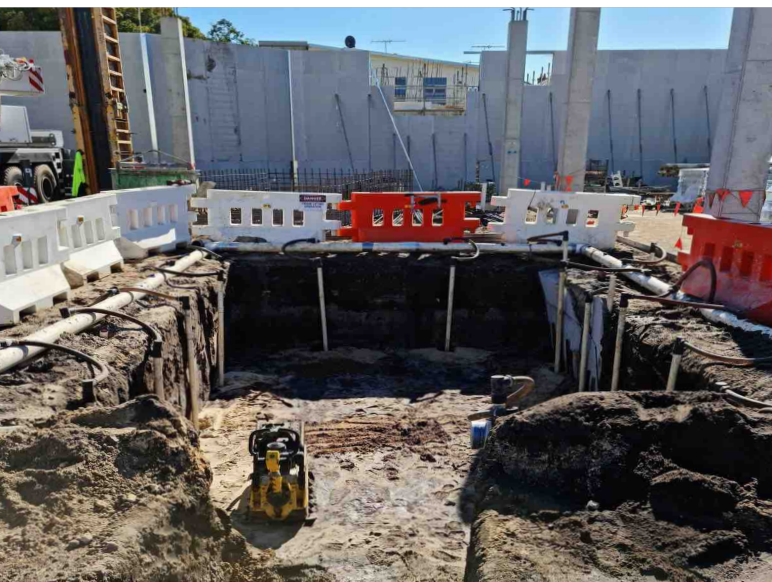


## EMU LAKE, CITY OF SWAN

Dewatering was required in an environmentally sensitive area along the edge of Emu Lake. The requirement was for a dry excavation to allow construction of a reed bed.

---

Client: City Of Swan  
 Budget: \$48 000.00  
 Date: Jul 19 - Aug 19



## WOOLWORTHS, HIGHGATE

Both the basement and hydraulics required extensive dewatering in highly permeable soils. From this the effluent had to be managed effectively with limited area

---

Client: Broad Construction  
 Budget: \$100 000.00  
 Date: Jul 20 - Sep 20



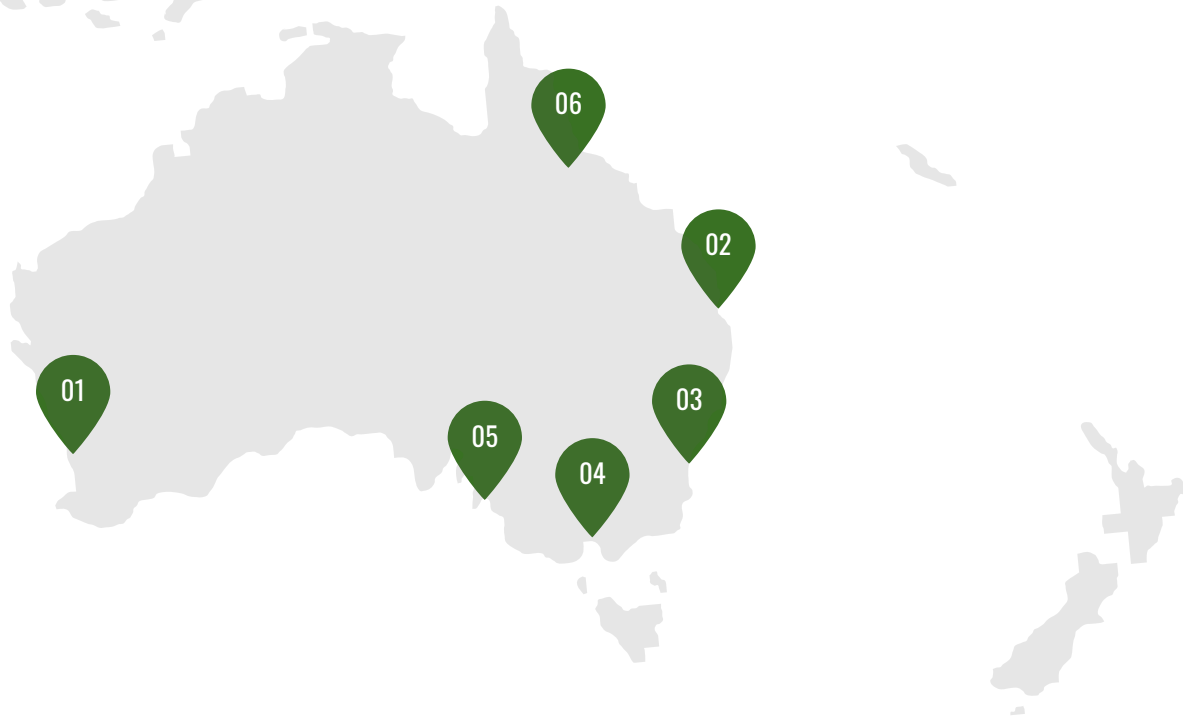


# SUPPORTING AUSTRALIA WIDE

## WHAT OUR CLIENTS HAVE TO SAY

" GSS have provided RJV with reliable equipment and an extremely high level of customer service across a variety of services from well-point dewatering, pump and trench box hire. Their key staff have exceptional knowledge in the industry, are always available/contactable for support and react very quickly to any of our needs. RJV would highly recommend GSS as an industry leader in their field. "

- Szymon Lizak - RJV



### 01 PERTH

- 85 Kelvin Rd Maddington , 6109
- scottl@gssaust.com.au
- 0428 288 411.

### 02 BRISBANE

- 62 Prairie Rd Ormeau, 4208
- Mickm@gssaust.com.au
- 0447 249 734

### 03 SYDNEY

- 55 Lawson Rd Badgerys Creek , 2555
- Daves@gssaust.com.au
- 0423 784 005

### 04 MELBOURNE

- 157 B Dohertys Rd Laverton, 3026
- Craigj@gssaust.com.au
- 0437 525 055

### 05 ADELAIDE

- 160 Churchill Rd North Cavan, 5094
- Simon@gssaust.com.au
- 0423 472 547

### 06 TOWNSVILLE

- richard@gssaust.com.au
- 0423 043 662

**” INDUSTRY LEADERS  
IN THEIR FIELD ”**

# OUR OFFICE

Our long presence in the industry is confirmation of our determination and commitment to achieve excellence on every project. Our company takes pride in working both for private and Government sector projects and delivering a quality end service and product with long term value for our clients.

Whatever location, contractual arrangement and challenges, Ground Support Systems Aust aims to consistently deliver a safe, high quality and cost effective product on time and to budget.



# CONTACT US

Mary Donald Nominees Pty. Ltd. T/A

Ground Support Systems (Aust) - ABN: 96 126 176 094

Ground Floor, 200 Adelaide Terrace, East Perth, WA, 6004

08 9454 2322

[WWW.GSSAUST.COM.AU](http://WWW.GSSAUST.COM.AU)

